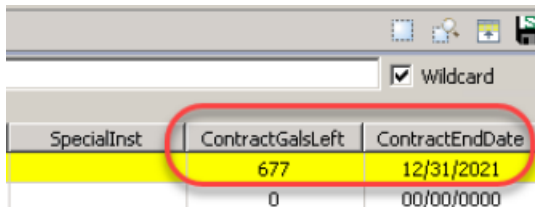


Version 14.6.25

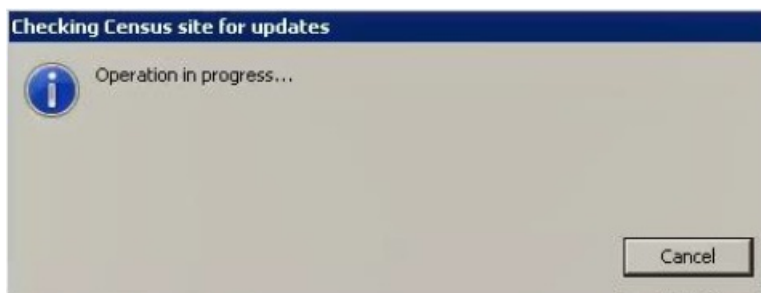
Last Modified on 11/01/2023 8:28 am EDT

- Contract Gallons Left and Contract End Date display on the table view of EnergyMap as expected. If there are multiple active contracts in Energy Force, the total of the remaining gallons on all active contracts will be added together in *ContractGalsLeft* column. The *ContractEndDate* column will display the earliest ending date from the active contracts.



SpecialInst	ContractGalsLeft	ContractEndDate
	677	12/31/2021
	0	00/00/0000

- EnergyMap is looking at the census.gov site for any updates to existing counties and, if any are identified, it will download them to the server. The timeout period has been reduced from 2 minutes per county to 10 seconds per county. This time reduction will allow the map to continue to load layers and open the map faster. While the EnergyMap is trying to connect to the census.gov site, the message below will display. If the connection to the site is taking too long, select **Cancel**. The map will continue opening and will attempt to check for census updates next time the map is opened.



- A new option has been added to exclude routes when recalculating tanks. Boundaries lines are used for visual reference and to recalculate tanks into Routes in Energy Force. There are times, however, when some tanks need to stay on a particular route even though they fall within the boundaries of another route. This *Exclude Route* option will give the ability to exclude those routes while still updating the other tanks using the route boundary lines. There is a new map user right that is required to be able to recalculate tanks.